



LED RITE

Indoor Lighting Product Guide

Table Of Contents

Indoor Lighting Product Guide

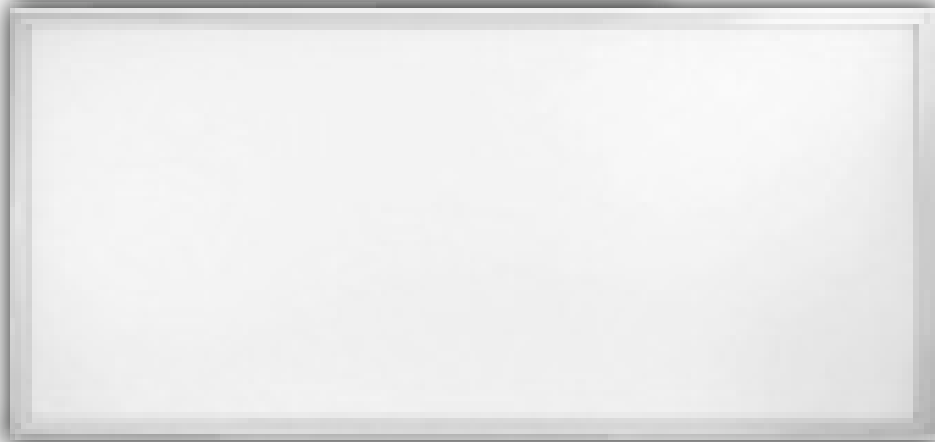
Thin Panel.....	2-5
Features.....	3
Specifications.....	4
Mounting Options.....	5
UFO High Bay.....	6-7
Features.....	6
Specificatnions.....	7
DIS High Bay.....	8-9
Features.....	8
Specifications.....	9
High Bay 4.....	10-11
Features.....	10
Specifications.....	11
Vapor Tight.....	12-13
Features.....	12
Specifications.....	13



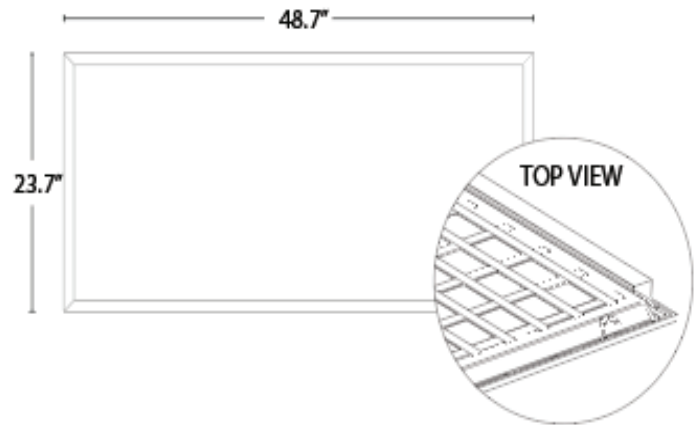
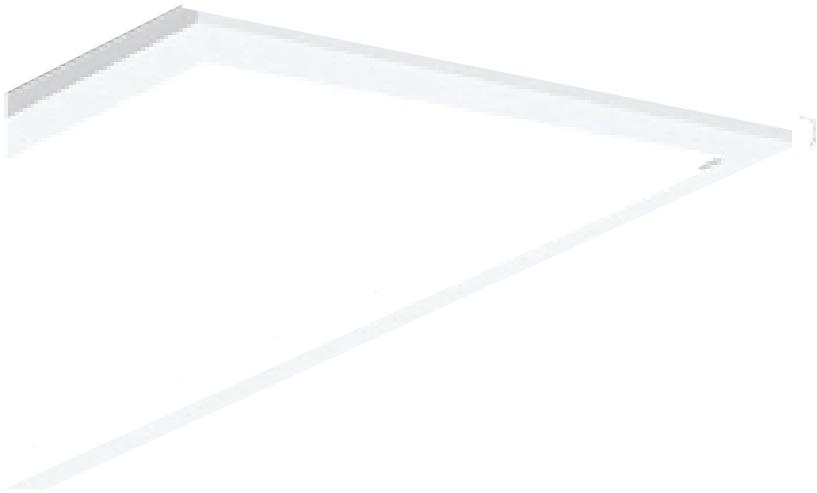
LED RITE

Back Lit Ultra Thin LED Panel Lights

From LED RITE



Upgrade to Brand New Back Lit Technology



New Backlighting Technology allows for smooth consistent light diffusion

Up to 36% saving on energy costs vs T8 fluorescent fixtures

Greater protection from dust and dirt than edge-lit models

Ideal for offices, conference rooms, hospitals, hotels, classrooms, and other common areas

Ultra Thin LED Panel Lights

TP Model - Product Specifications



Dimensions	2X4
Wattage	40W
Lumen Output (lumen) +/- 5%	5000
Input Voltage	100~277VAC, 50/60 HZ
Beam Angle	120
Color Temperature (k)	4000/5000
Color Rendering Index (CRI)	>80
Operating Temperature (F) (C)	-4 to 113 (-20 to 45)
Dimmer	0-10V DC
Construction/Finish	Aluminum + PMMA + PC Diffuser
Warranty (years)	5

Ultra Thin LED Panel Lights

TP Model - Mounting Options



Surface Mount Kit

Surface mounting fixture (ceiling/wall)



Hanging Mount Kit

Wirerope for suspension mounting (ceiling)



LED Rite UF Model- Dimmable, IP65

High performance and energy efficient High Bay
LED



Available Sizes:

100W (13" dia x 7.1" H)

150W (13" dia x 7.5" H)

200W (17" dia x 7.5" H)

FEATURES & BENEFITS:



- Modern and clean style, no exposed fasteners.
- Dimmable via 0-10VDC standard
- Rated Life : 50,000 hours
- RoHS Compliant - Mercury free and Lead free
- Direct replacement of HID luminaire.
- IP65 rating for water and dust resistance
- Excellent luminaire efficacy provides significant energy saving.
- Assembled in USA with domestic and imported components

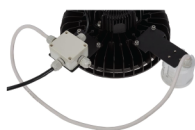
Page 6 of 13

US designed & assembled, UL certified and DLC Prime 4.2 listed high performance



LED Rite UFO Model- Dimmable

Product Specifications



100W | 150W | 200W

Input Voltage(VAC)	120-277 & 277-480		
Power Consumption(W)	100	150	200
Color Temperature (K)	4000/5000		
Color Rendering Index (CRI)	80		
Lumen Output (lumen)	14,000	21,000	28,000
Operating Temperature (F) (C)	-40 to 122 (-40 to 50)		
Dimmer	0-10V DC		
Warranty (years)	5		

Construction /Finish

Heat Sink : Aluminum Alloy
Lens Material : Polycarbonates

Page 7 of 13



LED Rite DIS Model- Dimmable

High performance and energy efficient Troffer
LED



Available Sizes:

1 x 4 ft. (12" x 48")

2 x 2 ft. (24" x 24")

2 x 4 ft. (24" x 48")

FEATURES & BENEFITS:



- Modern and clean style, no exposed fasteners.
- Dimmable via 0-10VDC standard
- Rated Life : 50,000 hours
- RoHS Compliant - Mercury free and Lead free
- Direct replacement of fluorescent troffer luminaire.
- Excellent luminaire efficacy provides significant energy saving.
- Assembled in USA with domestic and imported components

US designed & assembled, UL certified and DLC Prime 4.2 listed high performance

Page 8 of 13



LEDRite DIS Model- Dimmable

Product Specifications



2 x 2 ft. (600 x 600 mm)



2 x 4 ft. (600 x 1200 mm)



1 x 4 ft. (300 x 1200 mm)

Input Voltage(VAC)	120-277		
Power Consumption(W)	24	33	24
Color Temperature (K)	3000/3500/4000/5000		
Color Rendering Index (CRI)	80		
Lumen Output (lumen)	24W, 3,380 Lumen	33W, 4,455 Lumen	24W, 3,380 Lumen
Operating Temperature (F) (C)	-4 to 104 (-20 to 40)		
Dimmer	0-10V DC		
Warranty (years)	5		

Construction /Finish

- 24 guage die formed cold-rolled steel bod
- All steel surfaces are powder coated.
- Smooth edge for easy handling.

Page 9 of 13

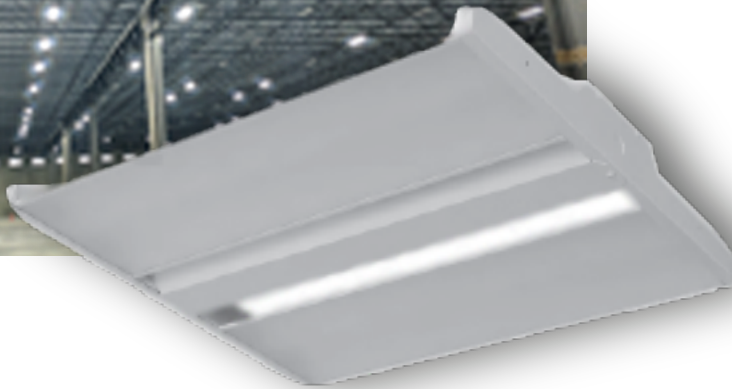


LED Rite H1B Model- Dimmable

High performance and energy efficient High Bay
LED



LED RITE



Available Sizes:

2L x 2 ft. (15" x 25")

4L x 2 ft. (19" x 25")

6L x 2 ft. (19" x 25")

4L x 4 ft. (19" x 47")

6L x 4 ft. (19" x 47")

FEATURES & BENEFITS:

- Modern and clean style, no exposed fasteners.
- Dimmable via 0-10VDC standard
- Rated Life : 50,000 hours
- RoHS Compliant - Mercury free and Lead free
- Direct replacement of fluorescent troffer luminaire.
- Excellent luminaire efficacy provides significant energy saving.
- Assembled in USA with domestic and imported components



Page 10 of 13

US designed & assembled, UL certified and DLC Prime 4.2 listed high performance



LED Rite HIB Model- Dimmable

Product Specifications



2L x 2 ft | 4L x 2 ft | 6L x 2 ft



4L x 4 ft | 6L x 4 ft

Input Voltage(VAC)	120-277				
Power Consumption(W)	90	135 & 178	265	321	425
Color Temperature (K)	4000/5000				
Color Rendering Index (CRI)	80				
Lumen Output (lumen)	11,700	17,550 & 23,140	34,450	41,730	55,250
Operating Temperature (F) (C)	-4 to 104 (-20 to 40)				
Dimmer	0-10V DC				
Warranty (years)	5				

Construction /Finish

- 22 guage die formed cold-rolled steel bod
- All steel surfaces are powder coated.
- Can be suspended mount from the ceiling by AYC or EYE chain or direct mount on the ceiling.

Page 11 of 13



TR Model

Vapor Tight LED Troffer (Dimmable)
VT Series
Luminaire LED



Electrical Specifications:

- Input Voltage: 100-277 VAC
- Luminaire Efficiency: 10 lm/w
- Operating Temperature: -4°F to 113°F
- Wattage: 45W/65W
- Lumen Output: 5850/8775 lumen @5000K
- Color Temperature (TYP): 4000K & 5000K
- Color Rendering Index: >=80

Features and Benefits:

- Modern and clean style, no exposed fasteners.
- IP65 rated design for wet location.
- Excellent luminaire efficacy provides significant energy saving.
- Dimmable via 0-10VDC standard
- Rated Life : 50,000 hours
- Assembled in USA with domestic and imported components
- RoHS Compliant - Mercury free and Lead free
- 5 Year Warranty

Construction/Finish:

- Diffuser: 100% UV Stabilized Polycarbonate integrated with crystals that eliminate glare and enhance lighting distribution
- Housing: 100% UV Stabilized Polycarbonate and liquid silicone perimeter gasket
- Weight: 10 LBS

Ordering Information
Example: **TR044045VT**

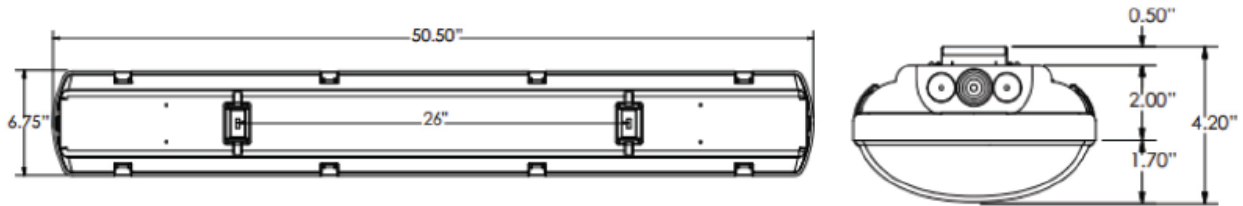


Model Number	Luminaire Type	Color Temperature	Output Wattage	Luminaire Series	Installation
TR	04	40	45	VT	BLANK (Optional)
	04- 4'	40- 4000K 50- 5000K	45- 45W 65-65W	VT- vapor tight troffer	(BLANK)- Surface mount (Standard) P- Pendant

Note: Specifications subject to change without notice. Actual performance may differ as a result of end user environment and application.



Vapor Tight Dimensions



Luminous Intensity Distribution

